

Algonquin Park Forest (MU #451) 2022 - 2023 Annual Work Schedule 2021 - 2031 Forest Management Plan TMIQ Summary Map

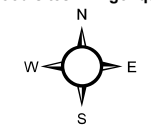
Legend

TMIQ Packages

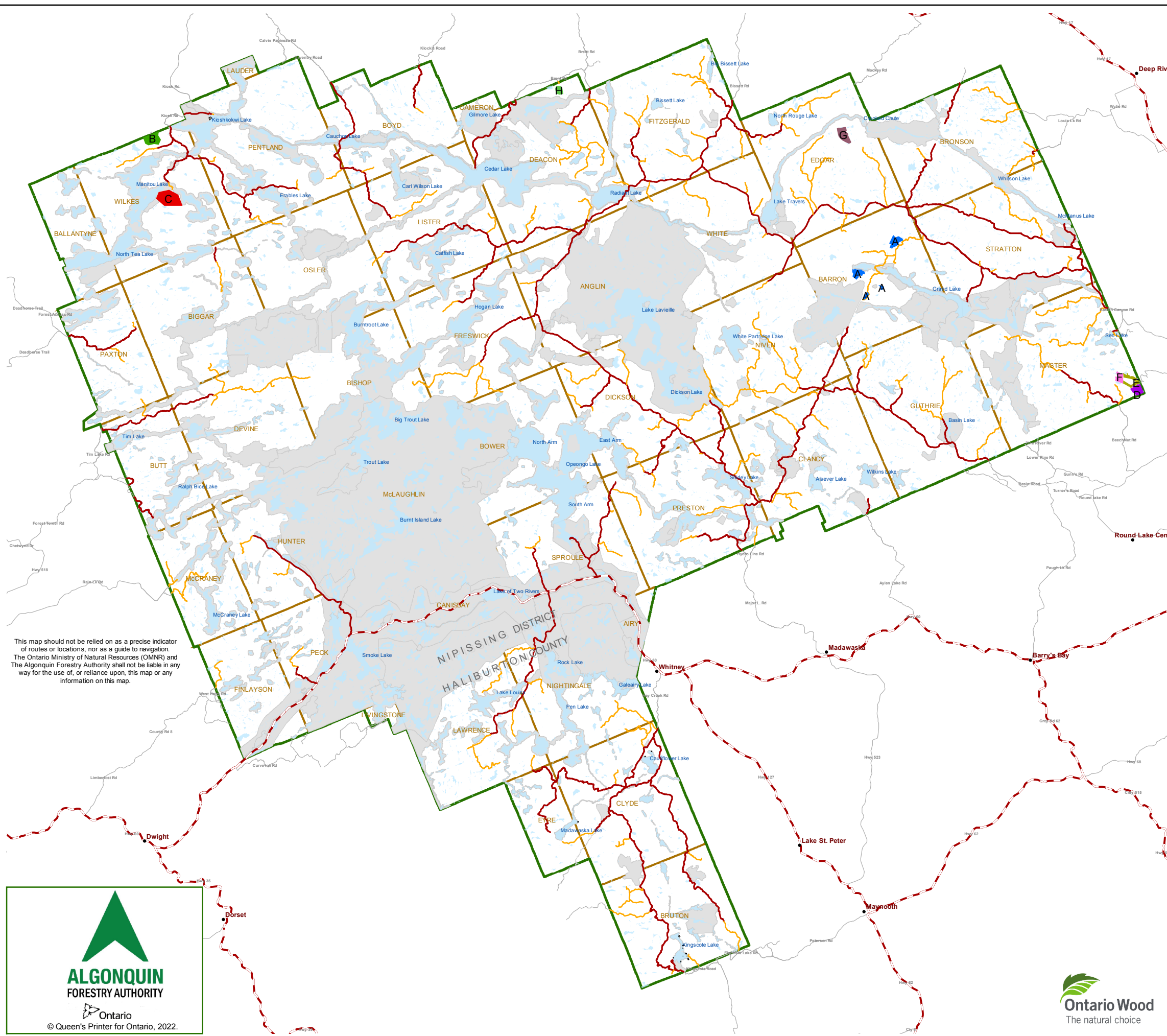
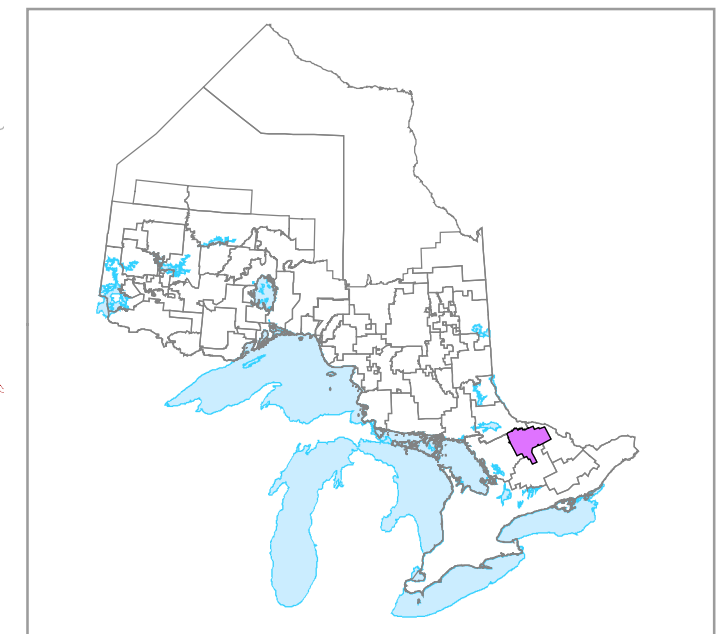
- Package A
- Package B
- Package C
- Package D
- Package E
- Package F
- Package G
- Package H

- Provincial Highways
- Primary
- Branch
- Public Access*
- Nature Reserve, Historical, Natural Environment, Wilderness, and Development Zones
- Township Boundary
- License/MU Boundary

There are no public fuelwood sites in Algonquin Park Forest



ORIGINAL DOCUMENT SCALE 1:450,000
0 3.5 7 14 21 28 Kilometres



This map should not be relied on as a precise indicator of routes or locations, nor as a guide to navigation. The Ontario Ministry of Natural Resources (OMNR) and The Algonquin Forestry Authority shall not be liable in any way for the use of, or reliance upon, this map or any information on this map.



NOTES: North American Datum 1983 Universal Transverse Mercator (6 degrees) Projection Zone 17, Central Meridian 81 degrees West Base features from Digital Forest Resource Inventory and Digital Ontario Basemaps
Revised: March 3, 2022. Produced by Algonquin Forestry Authority.